

# Level Sensing

## (AJ Series)

---

### Descriptions

Liquid point-level sensing solution with global recognized technology for level-marking control in automotive, machines, robotics, and other industrial applications.

### Features

Production for global brands in more than 10 years

Reliable control, easy installation, and more

### Common Applications (Reference)

Automotive Brake Oil Leveling

Automotive Windshield Liquid Leveling

Water/Liquid Container

Other Industrial Applications

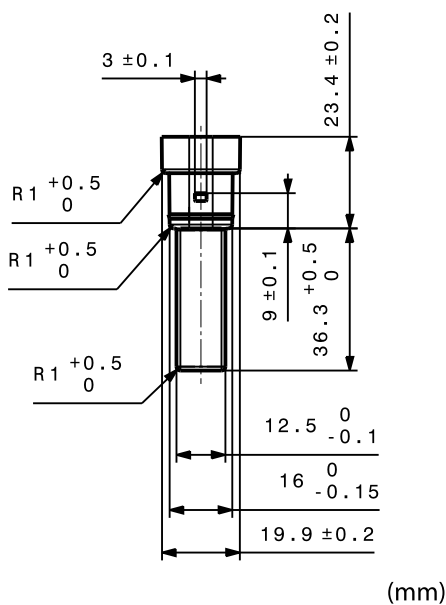


reference photo

## Ratings and Specifications

Item	Model : AJ
Power Supply Voltage	5.4 - 20 VDC
Environment Temperature	-40 to +120°C
Relatively Humidity	0% ≤ AJ ≤ 100%
Degree of Protection	IP67
Housing	Nylon or other materials available
Connection Method	Connector
Durability	Over 100,000 cycles

## Dimensions



## Output Circuit and Connection

